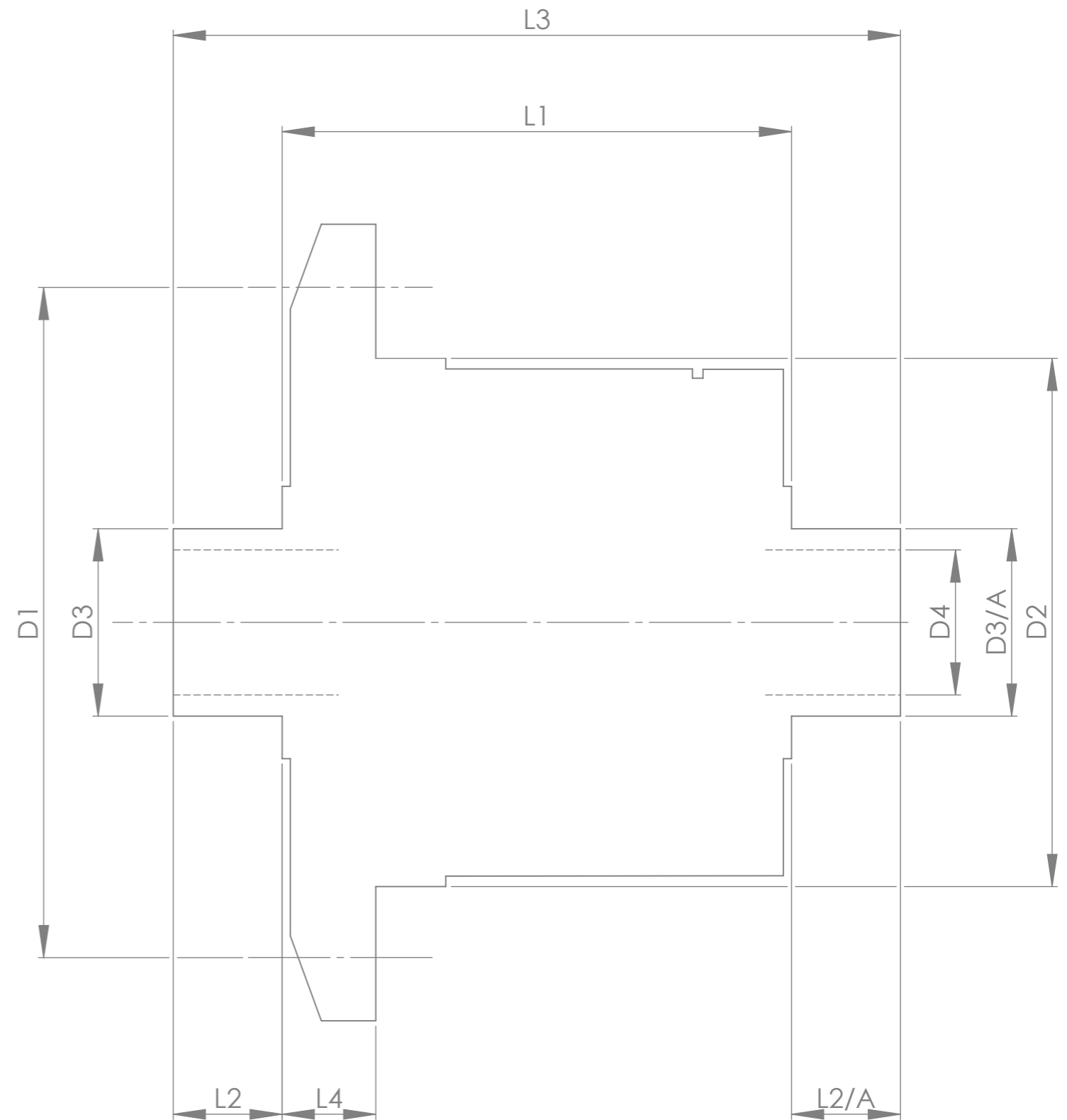


		INCH	MM
CROWN WHEEL BOLT PCD	D1	5.276	134
No. OF BOLTS		10	10
THREAD / THRO' HOLE		0.437	11.1
CROWN WHEEL SPIGOT DIA	D2	4.5288	115.0
BEARING DIA	D3	1.8112	46.0
	D3/A	1.8112	46.0
BEARING DISTANCE	L1	4.290	109.0
SPIGOT LENGTH	L2	1.420	36.0
	L2/A	1.535	39.0
OVERALL LENGTH	L3	7.245	184.0
BEARING/CROWN WHEEL	L4	0.354	9.0
BORE	D4	1.4963	38.0
DRIVE SHAFT SPLINE:-			
No. OF TEETH		37	
PITCH		32/64 DP	
TYPE		FILLET ROOT	SIDE FIT
PRESSURE ANGLE		30 DEG	



TITLE R.W.D. DIFF DATA SHEET.

SCALE 1:1 U.O.S. SHEET 1 OF 1

**Drg. No. QDF6Q**

**Quaife Design & Development.**

IF IN DOUBT, ASK.

THIS DRAWING OR DESIGN IS STRICTLY CONFIDENTIAL & THE COPYRIGHT THEREIN IS THE EXCLUSIVE PROPERTY OF RT QUAIFFE ENGINEERING LTD. AND MAY NOT BE USED, COPIED OR EXHIBITED WITHOUT THEIR WRITTEN PERMISSION.

FINISH. MACH, GRIND@G  
 LIMITS. FRACT. ± 1/64".  
 DEC. ± 0.005".  
 MATERIAL.  
 TREATMENT.  
 ISSUE. 01 DATE. 16.5.05  
 DRAWN BY. M.L.M.

**Used In. PORSCHE BOXSTER**